



The Expert of the Inflammasome Complex

Widely Used and Cited Antibodies

AG-25B-0006 anti-Asc, pAb (AL177)

SPECIES: Human, Mouse APPLICATION: ICC, IHC (PS), IP, WB, FUNC (*)

LIT: F. Martinon, et al.; Mol. Cell. **10**, 417 (2002) (*) • L. Agostini, et al.; Immunity **20**, 319 (2004) • P. Pelegrin, et al.; J. Immunol. **180**, 7147 (2008) • L. Kolly, et al.; J. Immunol. **183**, 4003 (2009)

AG-25B-0005 anti-NLRP1/NALP1 (human), pAb (AL176)

SPECIES: Human APPLICATION: WB

LIT: F. Martinon, et al.; Mol. Cell. **10**, 417 (2002)

AG-20B-0006 anti-NLRP3/NALP3 (mouse), mAb (Cryo-1)

SPECIES: Mouse APPLICATION: WB CLONE: Cryo-1 ISOTYPE: Mouse IgG2b

AG-20B-0014 anti-NLRP3/NALP3, mAb (Cryo-2)

SPECIES: Human, Mouse APPLICATION: WB CLONE: Cryo-2 ISOTYPE: Mouse IgG2b

LIT: R. Zhou, et al.; Nature Immunology **11**, 136 (2010) • A. Vilaysane, et al.; J. Am. Soc. Nephrol. **21**, 1732 (2010)

AG-25B-0021 anti-NLRP12/NALP12 (human), pAb (AL236)

SPECIES: Human APPLICATION: IP, WB

AG-25B-0013 anti-Nod1 (human), pAb (AL184)

SPECIES: Human APPLICATION: WB

LIT: M.J. Costello, et al.; Am. J. Reprod. Immunol. **57**, 67 (2007)

AG-25B-0020 anti-Pyrin (human), pAb (AL196)

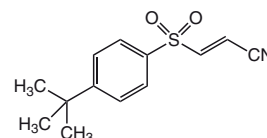
SPECIES: Human APPLICATION: IP, WB

LIT: S. Papin, et al.; Cell Death Differ. **14**, 1457 (2007)

Inflammasome Inhibitor

AG-CR1-0013 BAY 11-7082

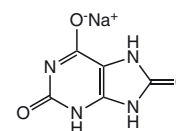
LIT: Anti-inflammatory compounds parthenolide and Bay 11-7082 are direct inhibitors of the inflammasome: C. Juliana, et al.; J. Biol. Chem. **285**, 9792 (2010)



NLRP3/NALP3 Inflammasome Activator

AG-CR1-3950 Monosodium urate (crystals)

AG-CR1-3951 Monosodium urate (ready-to-use solution)



Related Product

AG-40B-0023 IL-1 β (human) (rec.) (untagged) (MultiPack Available)